



ST. JOHN'S NATIONAL SCHOOL

Creideamh i nDia, creideamh inam féin



Drumgeely Avenue | Shannon
Tel: 061-471485 | 085-7642135
Email: principal@stjohnsns.org





Principals welcome:



It is my sincere pleasure to provide this welcome to you as Principal Teacher of St.John's National School, in Shannon Co.Clare. Firstly, I would like to thank you for considering our school for your child. Our school is a two teacher, co-educational school under the patronage of the Church of Ireland. We pride ourselves on the diversity of our pupil population and we endeavour to provide and ensure the highest quality education and widely renowned personal development to children of all faiths and none.

Our current student to teacher ratio is 9:1 which is among the lowest in the county. Which means your child gets more direct teacher time to help them best achieve their potential. This unparalleled student teacher ratio is listed highly among reasons parents have chosen our school in the past, followed closely by the schools sterling reputation locally and long legacy in Shannon town.

Opened in 1961, St.John's was the very first school in Shannon. As such, it is conveniently located close to all major access roads meaning it is only a three minute drive from Shannon town centre, and approximately 20 minutes drive from Limerick city or Ennis. Our school benefits from being at the end of a quiet cul-de-sac on Drumgeely Avenue and boasts impressive play area and significant public green access. St.John's is rooted in the Drumgeely and greater Shannon community and boasts strong links to the families and businesses here.

It is this sense of community, comradery, collegiality and work ethic which makes me proud to be a part of our team here at St.John's. Our promise to parents is as follows:

- To always strive to achieve greatness in our teaching and promote progression in our learning by providing a happy and safe learning environment.
- To adapt our teaching/policies as strategies and methodologies adapt and change and to keep in line with best practice in education.
- To always work together with parents/guardians to best support children in their learning.
- To provide your child with the pastoral care best suited to their needs.

I would like to take this opportunity to thank you for considering our school. Should you wish to look into enrolling your child in our school, I would invite you to review our newly developed 'on board' programme, and induction programme which have been put in place to make the transition into Junior Infants/from your child's current school as seamless and stress free as possible on all involved. Great care has been taken in the development of these procedures in order to ensure as smooth a transition as possible for you. Whether enrolling in school for the first time, or moving from a different school we have protocols in place to ensure your child feels welcome, safe and happy. This will allow them the freedom to learn effective and progress at the best possible rate for them.

This prospectus will give you a small taste of what our school is like. If you are considering enrolling your child I would be happy to arrange a visit to the school for you and the opportunity for your child to sit in on a lesson and meet our pupils. If I can be of assistance in any way please do not hesitate to contact me.

Your faithfully,

Kevin Toomey

General information (About our School)



St.John's is a co-educational school under the patronage of the Church of Ireland, Bishop of Limerick and Killaloe. Situated in a quiet residential part of the town of Shannon on a cul de sac, it is easily accessible from motorway serving both Ennis and Limerick. The school was established in 1961 and serves the families of Shannon and all neighbouring areas.

We aim to serve the community by providing education of the highest quality within the context of Christian belief and practice.

Following our last Whole School Evaluation, The Department of Education complimented 'the warm and supportive ethos of the school which is underpinned by the collegiality that is evident among staff, board, parent and children'.

The Board of Management is elected every four years, and is responsible for the direct governance of the school. The parent body contributes in a huge way to the work of the school through the Parents Association.

SOME of our Curricular/Extra Curricular Learning experiences

- Visits to the local library
- MS Readathon
- Write a book competition
- School plays
- Seasonal Liturgical Celebrations
- Art competitions
- GAA Coaching
- Charitable endeavours
- Junior achievement awards
- Educational tours and guest speakers

Visit our school!

While great care has been taken in the preparation of the prospectus document, we invite all prospective parents who are thinking of enrolling their child to pay a visit to the school. Meeting the staff, seeing the teaching environment first hand and observing the amazing teaching and learning that goes on first hand will be invaluable in your decision. So please, contact us and we will arrange a mutually agreeable time for you to pay a visit.

OnBoard and Induction

Our OnBoard and Induction programmes makes it easier for parents who are considering becoming members of our school community by enrolling their child.

■ We host an open evening each June to which any parent enrolling a child or thinking of enrolling a child is welcome. This gives parents a great flavour for what our school is like and gives you the opportunity to ask some questions and meet the team!

■ Pupils can visit their new classroom in June also, meet their new teacher, classmates and spend an afternoon getting to know one another. For pupils moving mid year, this can also be arranged.

Once your child is enrolled they will then progress to Induction.

■ With your permission contact will be made with your child's previous school or pre school to allow us to ensure we are best prepared for your child, their style of learning and any additional accommodations they may require.

■ If required, we will meet with previous teaching staff while consulting with you, the parent.

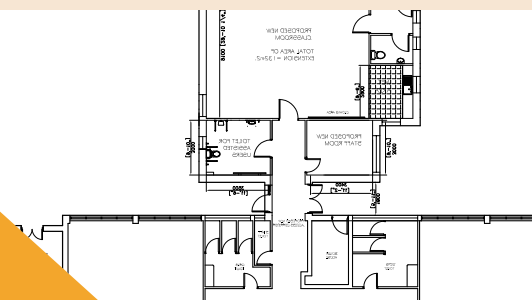
■ Your child will be assigned a class buddy to help them acclimatise to the day to day running of our school.

■ The school will remain in regular and close contact with you until your child has fully settled. After which your Teacher/Principal will be available to you by appointment and at regular Parent Teacher meetings throughout the year.



Extension

We are fortunate enough to be getting a brand new classroom with two toilets and wet area, an assisted user toilet, and a staff room, which it is hoped will be open by December 2020. This will increase our classroom space by 53%. The extension when finished will be the most modern educational space available in the Shannon area.



SEN

Every effort is made to welcome, accommodate, and include children of all needs and abilities. Our school has a fantastic record when it comes to helping students progress by building confidence in their own ability. We have built up a robust and effective bank of educational resources and strategies throughout the years which leave us best placed to address all the needs within our student body. Our experienced staff in co-ordination with NEPS (National Educational Psychological Services) and our school SENO (Special Educational Needs Organiser) work closely and focus on early identification and intervention where necessary.



Homework

At St.John's we see the value of engaging in homework as a means of revision of what has been covered in class, to develop critical thinking and problem solving skills independently and as an invaluable home/school line of communication. We also believe in a good school/life balance. We encourage our pupils to develop interests and hobbies outside of school and to this end we set a maximum of 40 mins homework (increased to 1 hour in 6th class). Should your child find their homework unfinished after the allocated time and they have been working in earnest, we suggest putting it to one side for that evening! A more detailed homework policy is available on request.



What our parents have to say:

'Sending our children to St.Johns school is such a positive and happy experience for the whole family. Our children have a real sense of belonging in this school. There is such a lovely atmosphere; almost like a family type feeling. The school is full of kindness from everyone you meet and genuine respect no matter who you are. It is safe to be yourself there; to show your personality and be open about your way of life. The children's strengths are seen and their needs are met with care and sensitivity. The children enjoy learning because of how it is presented to them and linked to interest and fun. You feel you can really trust all the staff team as they are all so passionate about their work and highly skilled. There is a richness in the mix of all the children attending and the children accept and discuss each other's differences in a respectful way. Situations and incidents happen with the children as to be expected and the staff support the children to have empathy and to develop skills needed for such moments and life. Thank you.' - M.C

'I would never consider sending my children anywhere else. I went to school here myself and I know the value of the school in the Drumgeely community and the amazing warm atmosphere. My two eldest children were so well prepared for secondary school both academically and in terms of their own personal growth' - A.L

'St.Johns have made it so easy for my child to become part of the school family. They celebrate difference and families from all faiths and none are welcomed with open arms' M.J

What our staff have to say:

'Having worked in the school on a short term basis years ago, I jumped at the chance of a permanent job there. There is something about the atmosphere once you walk in the door which seems to transcend changes in staff or changes in the student population. It is a warm welcoming and happy school where greatness is achieved. Everyone puts their shoulder to the wheel for the same goal. We never let our children down – and they never let us down.'

'There is something special about a small school, it is like a family'

What our children have to say:

'I love my school because I feel happy here. We get lots of time to play and its very easy to make friends here. There is great teachers and loads of computers. Every week is different and we play new games and try new things'

'There is lots of people to help you like teachers and SNAs , everybody is a big family here and everyone is friends aswell. There is no bullying at all it wouldn't be tolerated!!'

'Its small so you get to spend lots of time with people and make better friends. The teachers help make it easier to do your work. We get to play and do work at the same time which is really fun. My teacher is very kind also.'

What the department of Education have to say: (Excerpts from most recent Whole School Evaluation)

There is a warm and supportive ethos in the school and this ethos is underpinned by the collegiality that is in evidence among staff, board, parents and children. There is clear evidence that all pupils are respected and cherished and that their contributions are valued. This has resulted in a commendable rapport between pupils and teachers and has contributed to an overall positive atmosphere in the school with pupils well mannered, polite and forthcoming. The school is to be commended on the high level of pupil attendance.

The school is to be commended on the building of a positive school climate where pupils actively demonstrate a respect towards each other, their teachers and visitors. A positive code of behaviour and an anti-bullying policy are successfully implemented throughout the school. Very good classroom management skills are evident in both classrooms. Pupils co-operate in all activities and are encouraged to perform to the best of their ability. Supervision of assembly and dismissal of pupils along with yard supervision were observed as being of a high standard.

Teachers have ready access to a variety of material resources which was employed appropriately to augment the learning process. Classes are well structured and paced. Teachers effectively monitor and evaluate the work of the pupils and assist individual pupils where necessary. The children exhibit a positive attitude to learning and display appropriate curiosity and good problem solving and information retrieval skills. Parents and board report a high level of satisfaction with the achievement levels of the children and state in particular that the pupils are well prepared for transition to second-level schools.

The School Day

- 9am – School begins.
- 10.50am – Break time (10 mins)
- 12.30pm – Lunch time (30 mins)
- 1.40pm – Home time for Junior and Senior Infants.
- 2.40pm – School finishes.

Further Information/Contact Us

Please visit our website www.stjohnsnationalschool.ie

Twitter - @stjohnsshannon

School Landline: 061 - 471485

School Mobile: 085 - 7642135

